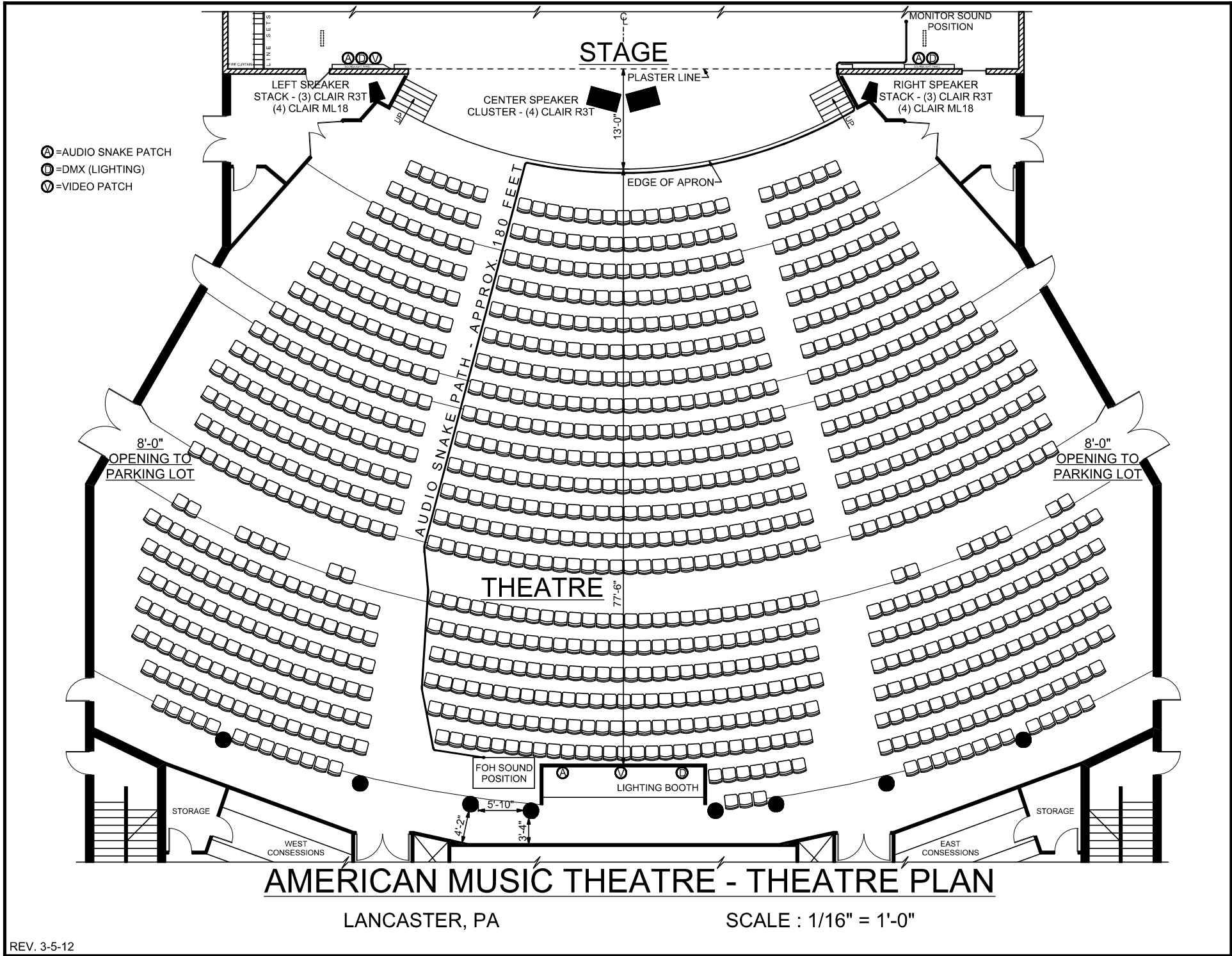
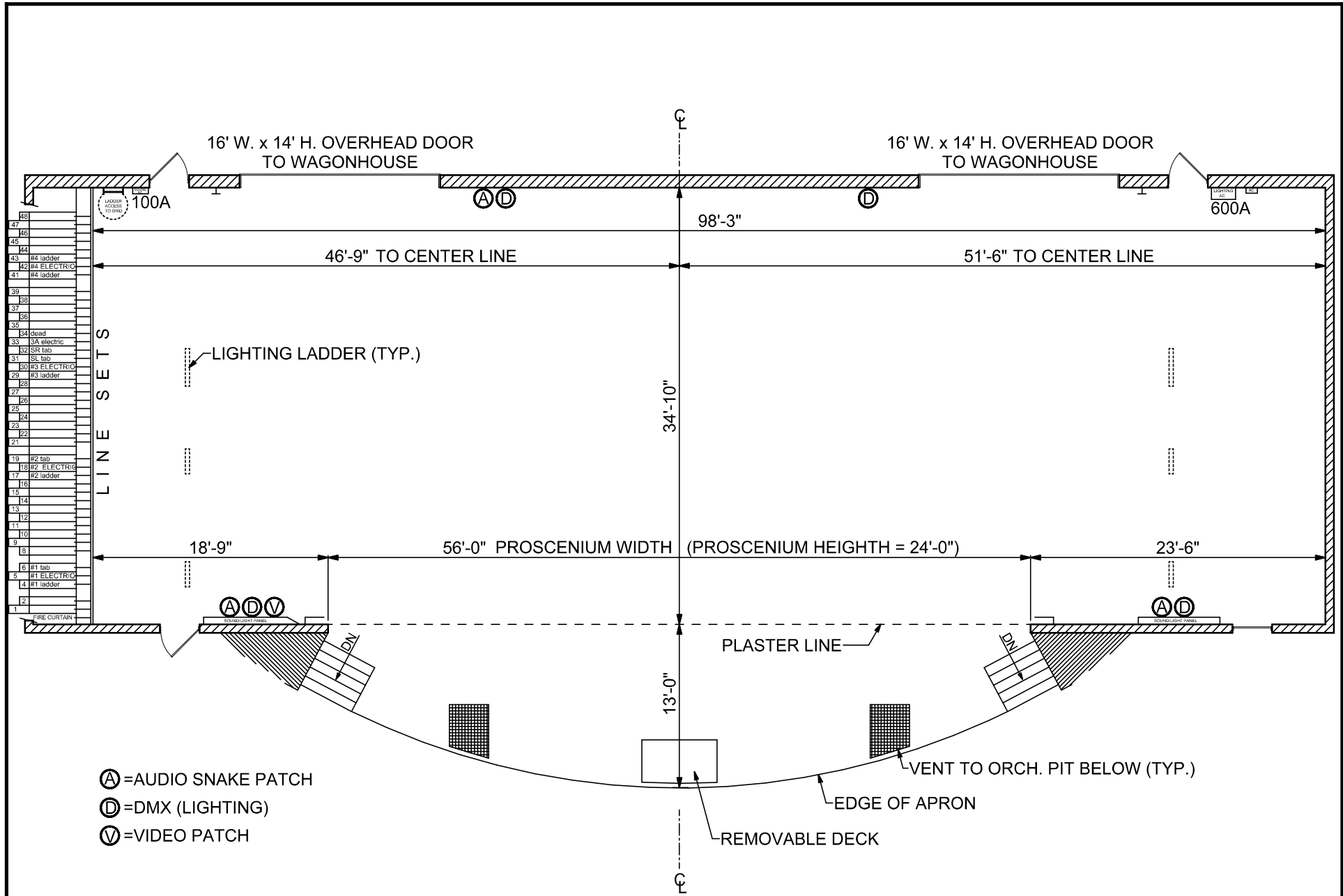


AMERICAN MUSIC THEATRE - LOBBY / MERCHANDISE AREA

LANCASTER, PA

SCALE : 1/16" = 1'-0"

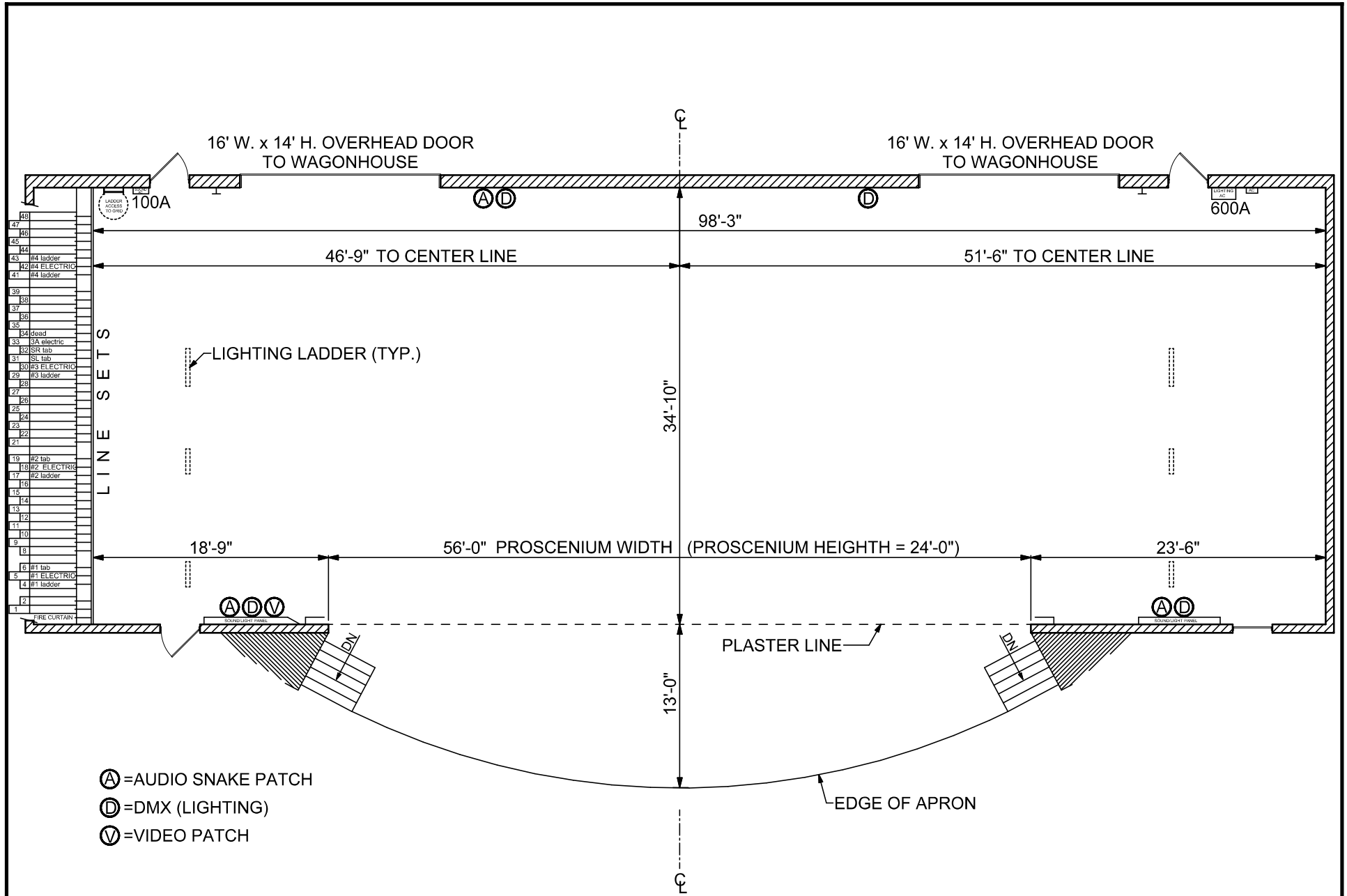


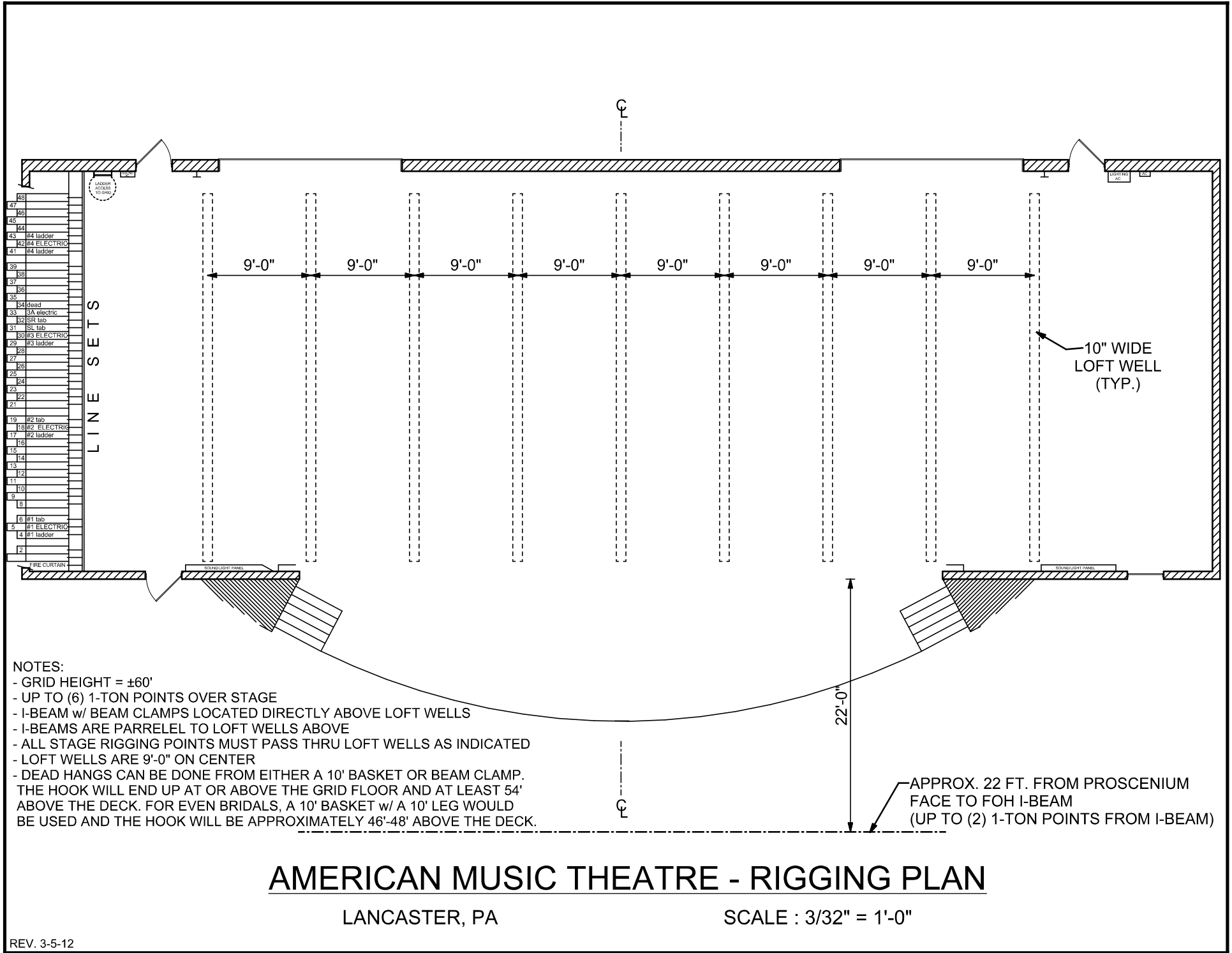


AMERICAN MUSIC THEATRE - STAGE

LANCASTER, PA

SCALE : 3/32" = 1'-0"

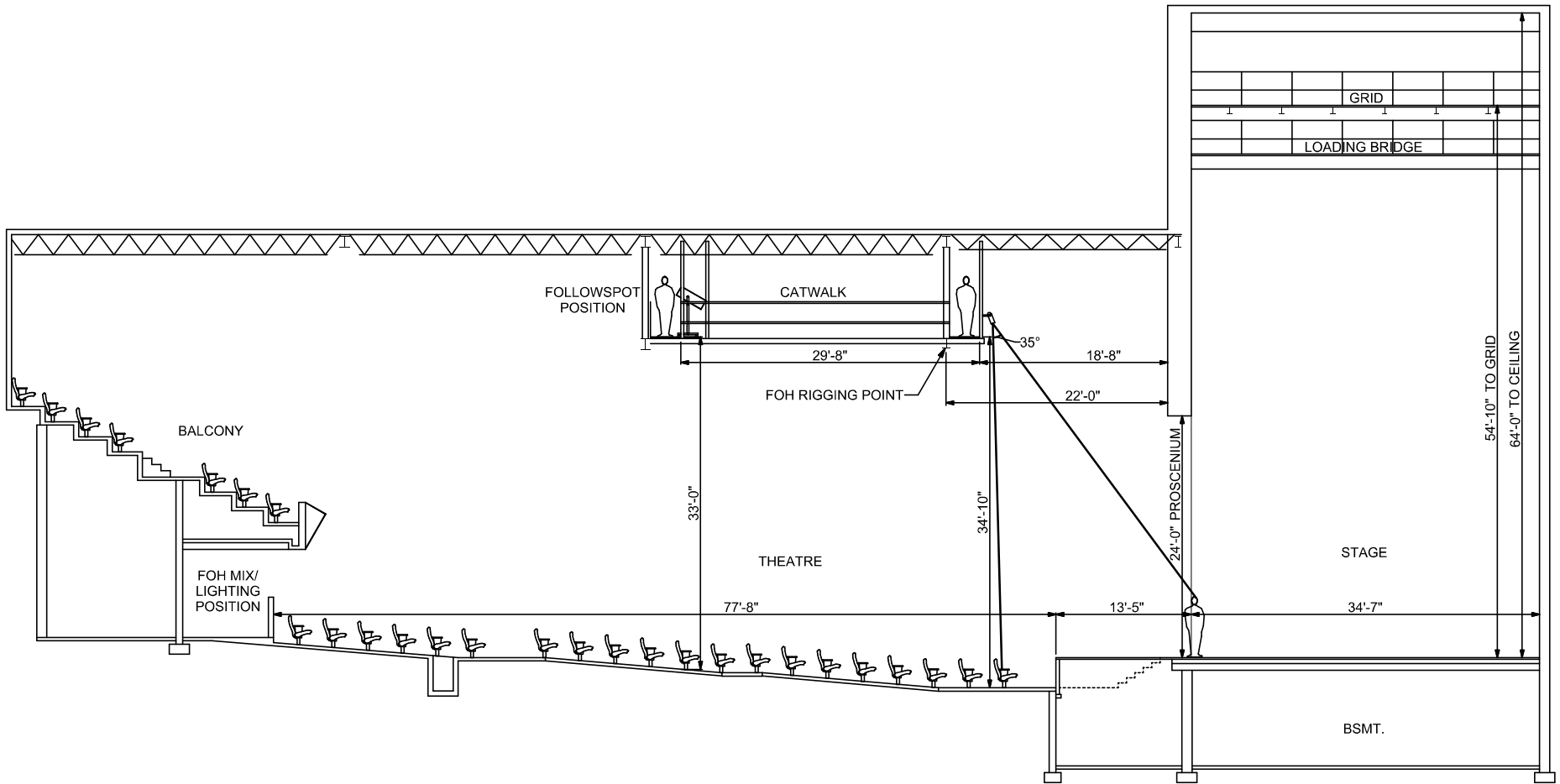




- LINE SETS
- 48
 - 47
 - 46
 - 44
 - 43 #4 ladder
 - 42 #4 ELECTRIC
 - 41 #4 ladder
 - 39
 - 38
 - 37
 - 36
 - 35
 - 34 drow
 - 33 SA electric
 - 32 SR tab
 - 31 SL tab
 - 30 #3 ELECTRIC
 - 29 #3 ladder
 - 28
 - 27
 - 26
 - 25
 - 24
 - 23
 - 22
 - 21
 - 19 #2 tab
 - 18 #2 ELECTRIC
 - 17 #2 ladder
 - 16
 - 15
 - 14
 - 13
 - 12
 - 11
 - 10
 - 9
 - 8
 - 6 #1 tab
 - 5 #1 ELECTRIC
 - 4 #1 ladder
 - 2

NOTES:

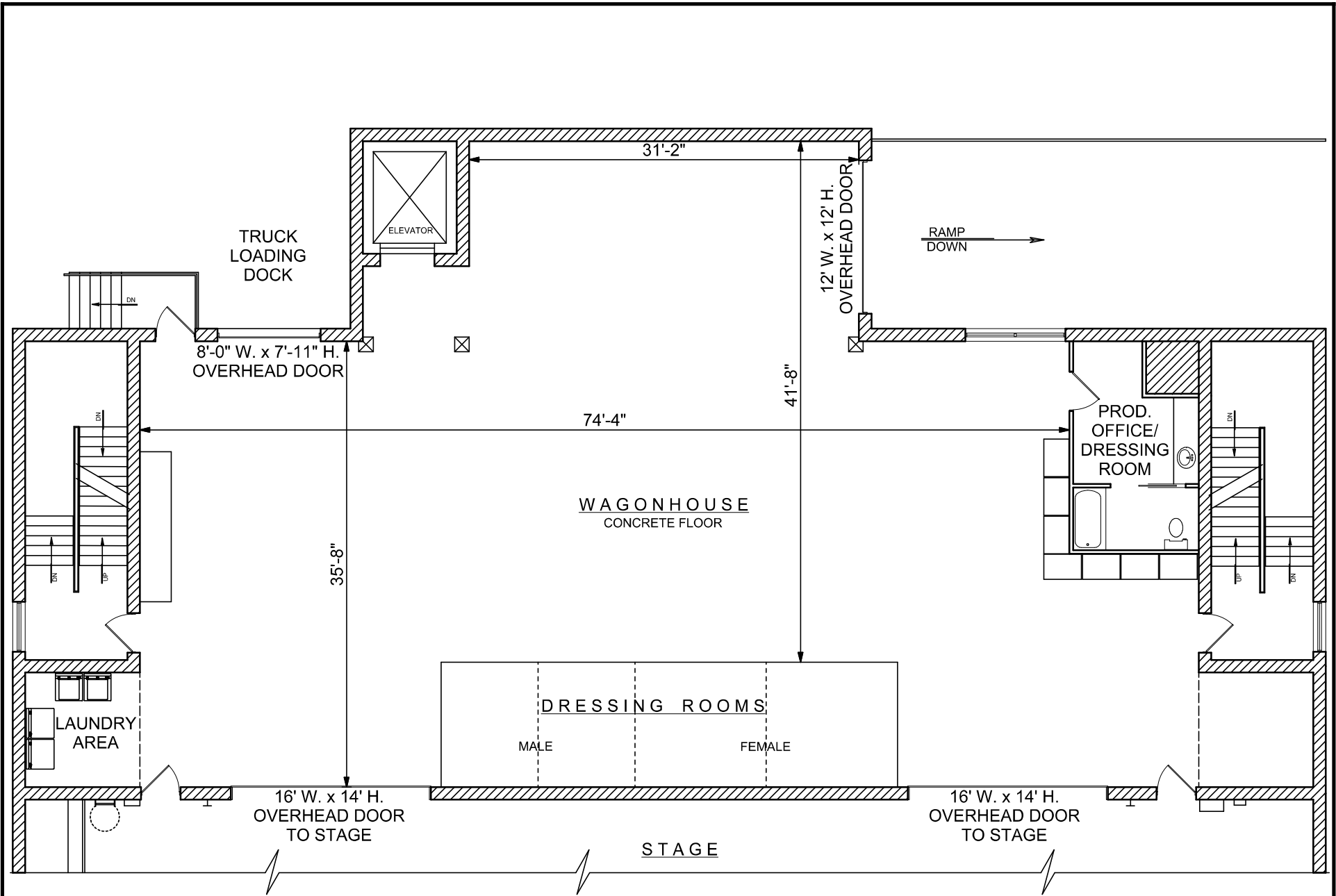
- GRID HEIGHT = ±60'
- UP TO (6) 1-TON POINTS OVER STAGE
- I-BEAM w/ BEAM CLAMPS LOCATED DIRECTLY ABOVE LOFT WELLS
- I-BEAMS ARE PARRELEL TO LOFT WELLS ABOVE
- ALL STAGE RIGGING POINTS MUST PASS THRU LOFT WELLS AS INDICATED
- LOFT WELLS ARE 9'-0" ON CENTER
- DEAD HANGS CAN BE DONE FROM EITHER A 10' BASKET OR BEAM CLAMP. THE HOOK WILL END UP AT OR ABOVE THE GRID FLOOR AND AT LEAST 54' ABOVE THE DECK. FOR EVEN BRIDALS, A 10' BASKET w/ A 10' LEG WOULD BE USED AND THE HOOK WILL BE APPROXIMATELY 46'-48' ABOVE THE DECK.



AMERICAN MUSIC THEATRE - SECTION THRU

LANCASTER, PA

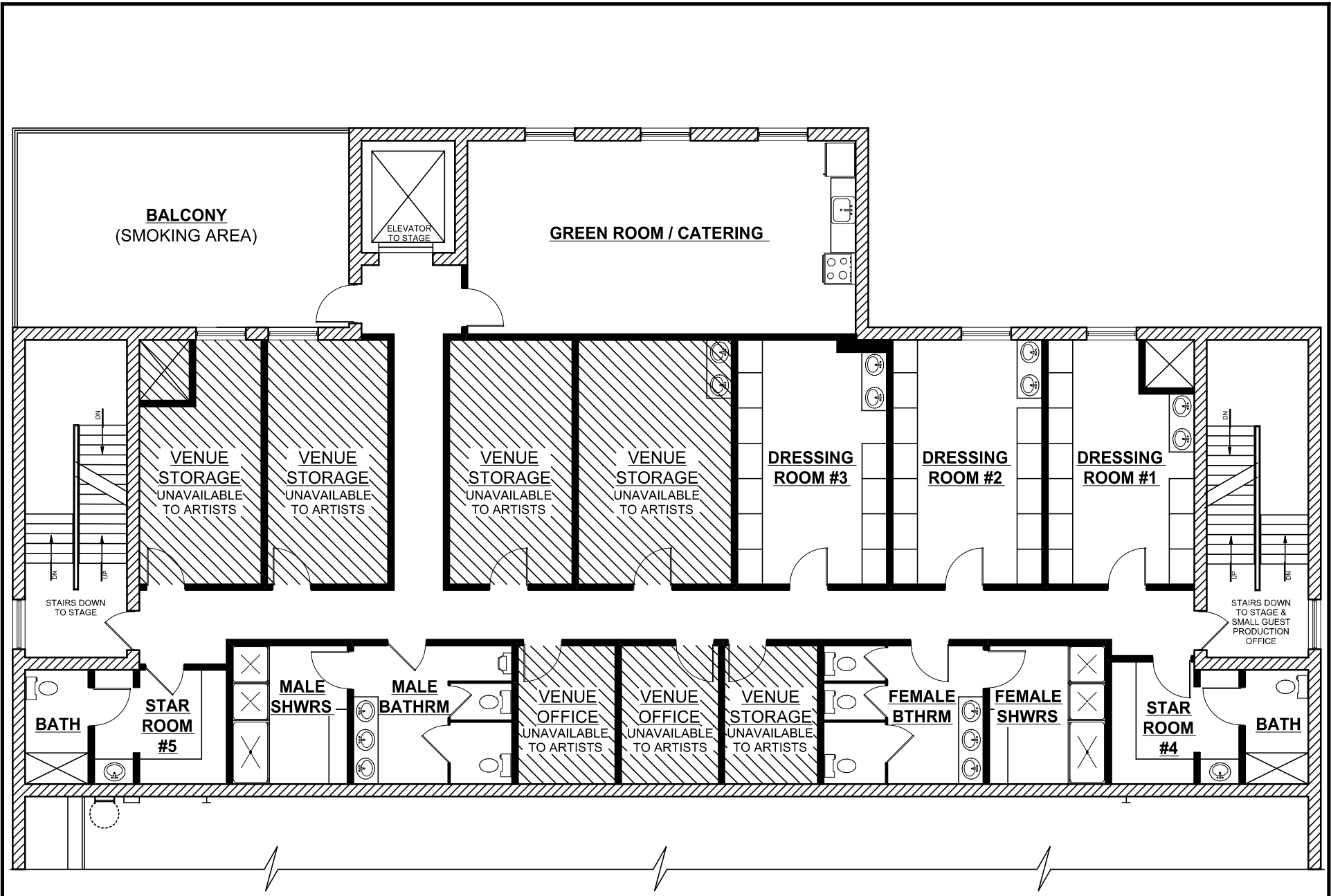
SCALE : 1/16" = 1'-0"



AMERICAN MUSIC THEATRE - WAGONHOUSE

LANCASTER, PA

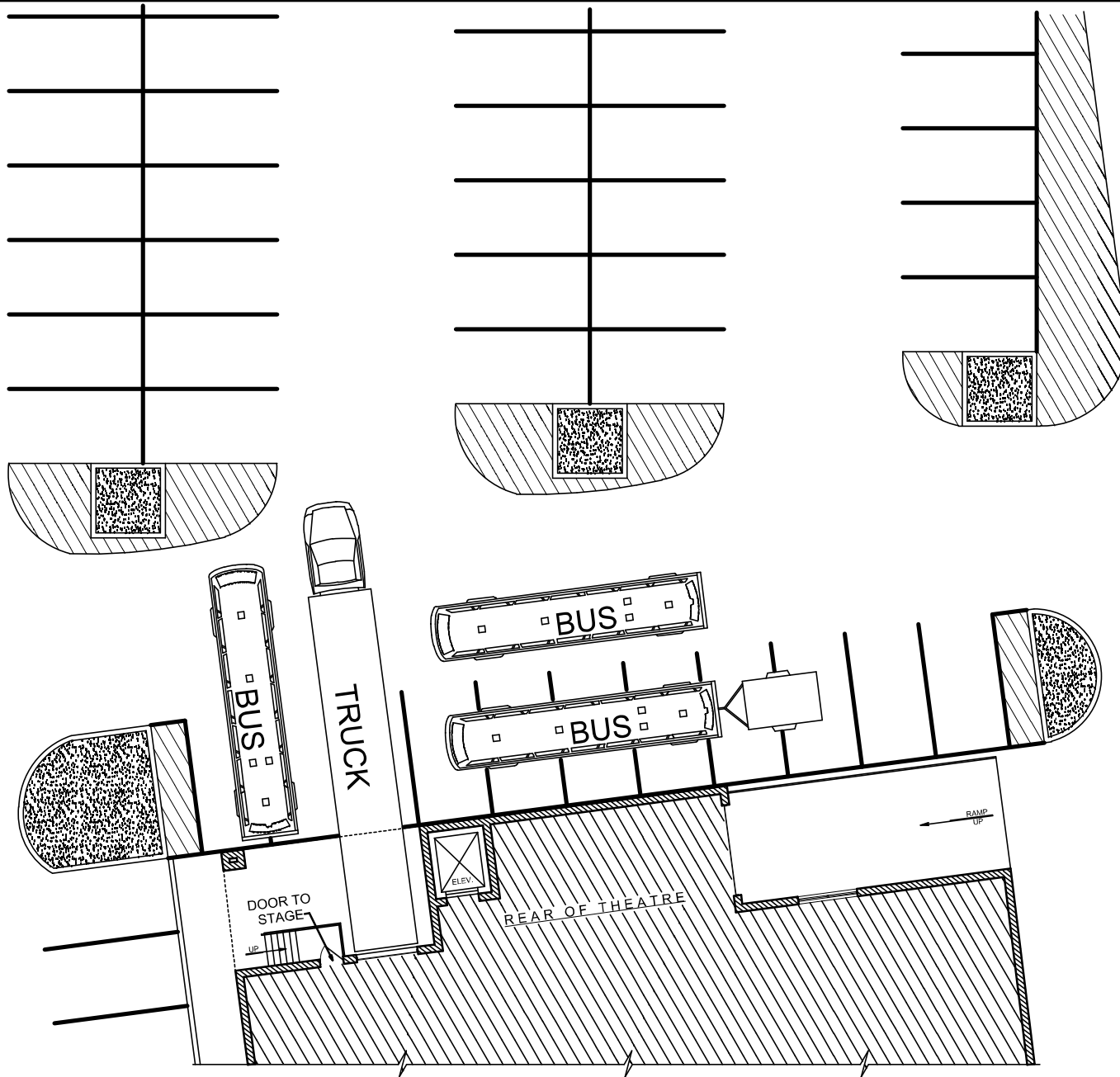
SCALE : 3/32" = 1'-0"



AMERICAN MUSIC THEATRE - DRESSING ROOM LAYOUT

LANCASTER, PA

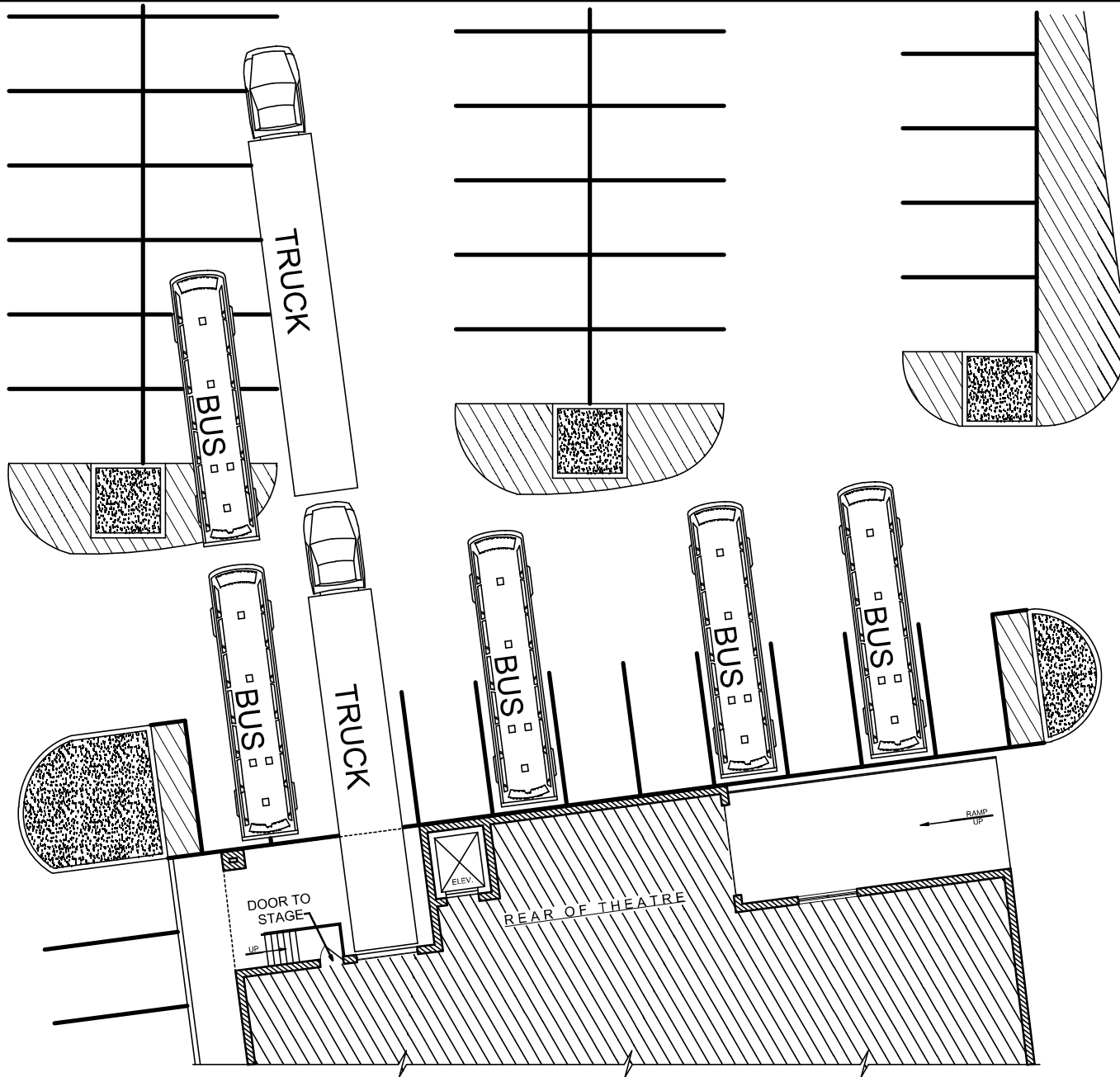
SCALE : 3/32" = 1'-0"



AMERICAN MUSIC THEATRE - PARKING OPTION "A"

LANCASTER, PA

NO SCALE



AMERICAN MUSIC THEATRE - PARKING OPTION "B"

LANCASTER, PA

NO SCALE